

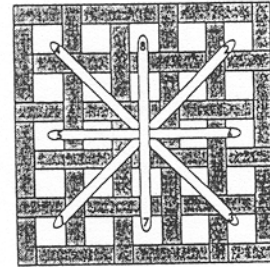
Spring In View

Stitch Count: 36 wide X 41 high

Finished design size on 32 count linen: 2- 1/4" X 2- 1/2"

Model stitched on 32-count Lambswool Linen (# 65-135) courtesy of Wichelt Imports, 162 N Hwy. 35, Stoddard, WI 54658

COLOR	SYMBOL
Bittersweet	+
Gold Leaf	no symbol
Cornflower	*
Summer Meadow)
Spring Grass	-
Midnight	no symbol



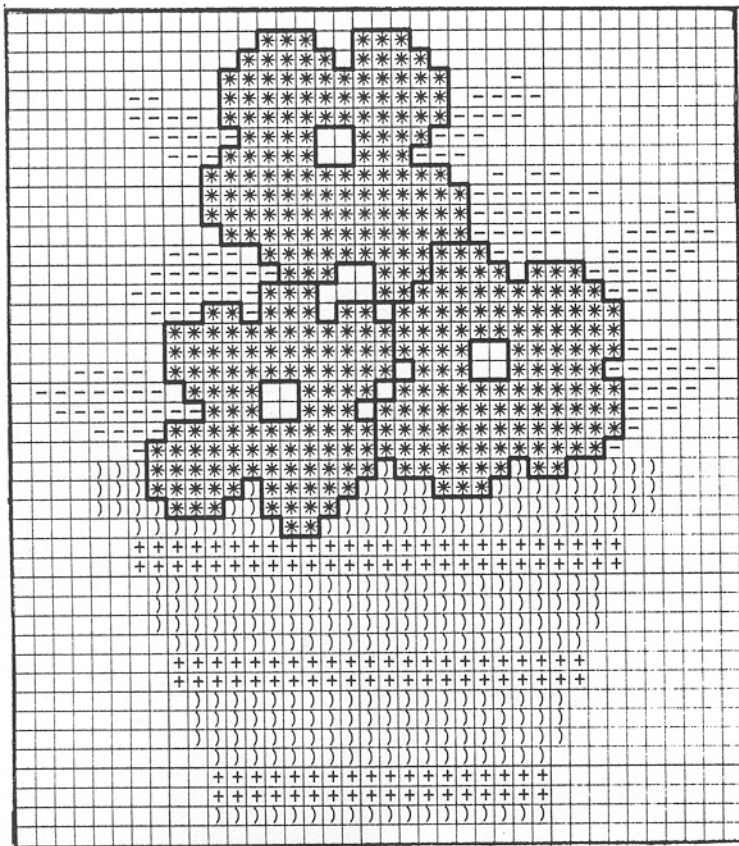
Smyrna Cross Stitch

All stitching worked with two strands of floss in Cross-Stitch over two except work the boxed off center of each flower in Smyrna Cross-Stitch over four threads using Gold Leaf.

Backstitch around the flowers with one strand of Midnight.

Finish this piece any way you choose, and enjoy!

We at The Gentle Art hope that you enjoy this free chart. Happy Spring!!!



The Gentle Art

counted thread embroidery



4081 Bremo Recess

New Albany, OH 43054

614/855-8346